



Equity Screening Reports

**Epiphany Equity Research**  
"Setting the standard for technical analysis"

237 Park Ave  
Suite 900  
New York, New York 10015  
Telephone (212)692-6392

John Hughes, Managing Director  
Jhughes@epiphanyresearch.com

Scott Maragioglio, Director of Research  
Smaragio@epiphanyresearch.com

Sherrie Kharouba, Director of Customer Service  
Skharouba@epiphanyresearch.com



Prepared By Epiphany Equity Research

**Week Ending Tuesday, January 03,**

**Table of Contents:**

Bullish Screen S&P 4 & 5 Star Rated Stocks. 2-5

Chart Breakout. 6-10



**Email:** [Customerservice@epiphanyresearch.com](mailto:Customerservice@epiphanyresearch.com)  
**www.EpiphanyResearch.com**  
Contact Sherrie Kharouba for  
Username and Passwords  
[Skharouba@epiphanyresearch.com](mailto:Skharouba@epiphanyresearch.com)

The tables on pages 2-4 contain technically bullish 4&5 star S&P rated stocks. The stocks highlighted in red are charts that we feel would be of particular interest. We have also broken out several stocks we believe should be focused on and provided expanded analysis.

## S&P 5 Star Rated Stocks | Bullish Technical Configurations

<b>CAL</b>	Continental Airlines B	TRANSPORTATION - Major Airlines	NYSE	21.69	12742
<b>CIT</b>	Cit Group Cl A	FINANCIAL SERVICES - Credit Services	NYSE	51.92	3022
<b>CL</b>	Colgate-Palmolive Co	CONSUMER NON-DURABLES - Personal Products	NYSE	55.19	4700
<b>CNF</b>	Cnf Transportation Inc	TRANSPORTATION - Trucking	NYSE	57.27	1119
<b>CNQ</b>	Canadian Natural Res Ltd	ENERGY - Independent Oil & Gas	NYSE	49.98	3427
<b>COF</b>	Capital One Financial Cp	FINANCIAL SERVICES - Credit Services	NYSE	87.03	2856
<b>COH</b>	Coach Inc	CONSUMER NON-DURABLES - Textile - Apparel Footwear & Acc	NYSE	33.77	8446
<b>CTXS</b>	Citrix Systems Inc	INTERNET - Internet Software & Services	NASDAQ	29.01	3703
<b>CVH</b>	Coventry Health Care Inc	HEALTH SERVICES - Health Care Plans	NYSE	57.09	5568
<b>CYH</b>	Community Health Systems	HEALTH SERVICES - Hospitals	NYSE	38.89	1957
<b>DVN</b>	Devon Energy Corp	ENERGY - Independent Oil & Gas	NYSE	63.36	12414
<b>ENDP</b>	Endo Pharmaceuticals Hld	DRUGS - Drug Manufacturers - Other	NASDAQ	30.48	1533
<b>ET</b>	E Trade Financial Corp	FINANCIAL SERVICES - Investment Brokerage - National	NYSE	21.42	13127
<b>FCH</b>	Felcor Lodging Trust Inc	REAL ESTATE - REIT - Hotel/Motel	NYSE	16.99	625
<b>FDX</b>	Fedex Corp	TRANSPORTATION - Air Delivery & Freight Service	NYSE	104.66	5599
<b>GS</b>	Goldman Sachs Group Inc	FINANCIAL SERVICES - Investment Brokerage - National	NYSE	128.31	8626
<b>GSF</b>	Globalsantafe Corp	ENERGY - Oil & Gas Drilling & Exploration	NYSE	48.46	8068
<b>GWW</b>	W.W. Grainger Inc	WHOLESALE - Electronics Wholesale	NYSE	71.76	1022
<b>HIG</b>	Hartford Financial Services	INSURANCE - Property & Casualty Insurance	NYSE	86.9	3410
<b>HOLX</b>	Hologic Inc	HEALTH SERVICES - Medical Appliances & Equipment	NASDAQ	38.59	2000
<b>IR</b>	Ingersoll-rand Ltd Cl A	MANUFACTURING - Diversified Machinery	NYSE	40.97	2716
<b>LHO</b>	Lasalle Hotel Properties	REAL ESTATE - REIT - Hotel/Motel	NYSE	36.64	482
<b>LRCX</b>	Lam Research Corp	ELECTRONICS - Semiconductor Equipment & Materials	NASDAQ	36.8	6525
<b>LSTR</b>	Landstar System Inc	TRANSPORTATION - Trucking	NASDAQ	42.82	1890
<b>MET</b>	Metlife Inc	INSURANCE - Life Insurance	NYSE	49.4	9801
<b>MOT</b>	Motorola Inc	TELECOMMUNICATIONS - Communication Equipment	NYSE	22.91	77537
<b>MRVL</b>	Marvell Technology Group	ELECTRONICS - Semiconductor - Integrated Circuits	NASDAQ	57	11735
<b>MTW</b>	Manitowoc Co Inc	MANUFACTURING - Farm & Construction Machinery	NYSE	51.31	544
<b>NBR</b>	Nabors Industries Inc	ENERGY - Oil & Gas Drilling & Exploration	NYSE	76.49	8109
<b>PEP</b>	Pepsico Inc	FOOD & BEVERAGE - Beverages - Soft Drinks	NYSE	59.42	10520
<b>PG</b>	Procter & Gamble Co	CONSUMER NON-DURABLES - Cleaning Products	NYSE	58.2	18674
<b>PWAV</b>	Powerwave Technologies	TELECOMMUNICATIONS - Communication Equipment	NASDAQ	12.8	7386
<b>RHI</b>	Robert Half Internat	DIVERSIFIED SERVICES - Staffing & Outsourcing Services	NYSE	38.19	3021
<b>RNVS</b>	Renovis	DRUGS - Biotechnology	NASDAQ	16.01	467
<b>SLH</b>	Strategic Hotel Capital Inc	REAL ESTATE - REIT - Hotel/Motel	NYSE	20.11	439
<b>STJ</b>	Saint Jude Medical Inc	HEALTH SERVICES - Medical Appliances & Equipment	NYSE	50.97	6797
<b>TEVA</b>	Teva Pharm Ind	DRUGS - Drug Manufacturers - Other	NASDAQ	43.39	11225
<b>TROW</b>	T. Rowe Price Associates	FINANCIAL SERVICES - Asset Management	NASDAQ	72.14	1094
<b>UNH</b>	UnitedHealth Group Inc.	HEALTH SERVICES - Health Care Plans	NYSE	63.17	20000
<b>VLO</b>	Valero Energy Corp	ENERGY - Oil & Gas Refining & Marketing	NYSE	52.28	40081
<b>WLP</b>	Wellpoint Inc	HEALTH SERVICES - Health Care Plans	NYSE	79.92	21239



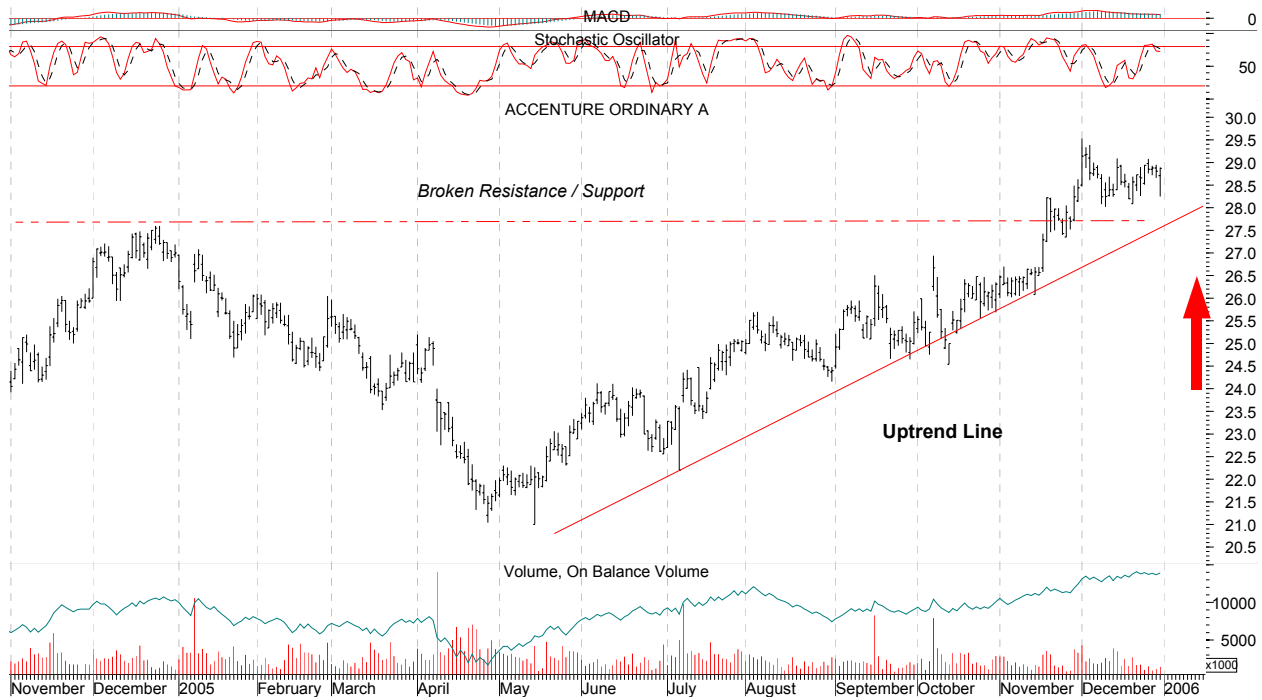
## S&amp;P 4 Star Rated Stocks | Bullish Technical Configurations

<b>ABX</b>	Barrick Gold Corp	METALS & MINING - Gold	NYSE	28.14	28917
<b>ACN</b>	Accenture Ltd	DIVERSIFIED SERVICES - Business/Management Services	NYSE	28.72	6611
<b>ACV</b>	Alberto-Culver CI B	CONSUMER NON-DURABLES - Personal Products	NYSE	46.37	1382
<b>ACXM</b>	Acxiom Corp	COMPUTER SOFTWARE & SERVICES - Information Technology	NASDAQ	23.03	2319
<b>ALK</b>	Alaska Air Group Inc	TRANSPORTATION - Regional Airlines	NYSE	36.09	2382
<b>AMT</b>	American Tower Corp	TELECOMMUNICATIONS - Diversified Communication Services	NYSE	27	8882
<b>ANSS</b>	Ansys Inc	COMPUTER SOFTWARE & SERVICES - Technical & System So	NASDAQ	43.82	421
<b>ATW</b>	Atwood Oceanics Inc	ENERGY - Oil & Gas Drilling & Exploration	NYSE	79.3	1259
<b>AYE</b>	Allegheny Energy Inc	UTILITIES - Electric Utilities	NYSE	31.86	4336
<b>AZ</b>	Allianz Ag Ads	INSURANCE - Property & Casualty Insurance	NYSE	15.33	1218
<b>BDX</b>	Becton Dickinson & Co	HEALTH SERVICES - Medical Instruments & Supplies	NYSE	60.56	2435
<b>BF</b>	Basf Ag Ads	CHEMICALS - Synthetics	NYSE	77.43	224
<b>BHE</b>	Benchmark Electronics	ELECTRONICS - Printed Circuit Boards	NYSE	34.01	453
<b>BHI</b>	Baker Hughes Inc	ENERGY - Oil & Gas Equipment & Services	NYSE	61.46	9432
<b>BIIB</b>	Biogen Idec Inc	DRUGS - Biotechnology	NASDAQ	45.07	5722
<b>BNI</b>	Burlington Nth Santa	TRANSPORTATION - Railroads	NYSE	71.33	8027
<b>BPO</b>	Brookfield Properties	REAL ESTATE - Property Management/Development	NYSE	29.8	1779
<b>BRL</b>	Barr Laboratories Inc	DRUGS - Drugs - Generic	NYSE	63.12	2929
<b>CAM</b>	Cooper Cameron Corp	ENERGY - Oil & Gas Equipment & Services	NYSE	41.79	7685
<b>CASY</b>	Casey's General Stores	RETAIL - Grocery Stores	NASDAQ	24.92	748
<b>CB</b>	Chubb Corp	INSURANCE - Property & Casualty Insurance	NYSE	98.53	3324
<b>CBG</b>	Cb Richard Ellis Svcs	REAL ESTATE - Property Management/Development	NYSE	59.27	1757
<b>CDIS</b>	Cal Dive International	ENERGY - Oil & Gas Equipment & Services	NASDAQ	37.08	4813
<b>CELG</b>	Celgene Corp	DRUGS - Drug Manufacturers - Major	NASDAQ	64.32	62308
<b>CEPH</b>	Cephalon Inc	DRUGS - Drug Manufacturers - Other	NASDAQ	64.63	17804
<b>CHL</b>	China Mobile Ltd	TELECOMMUNICATIONS - Wireless Communications	NYSE	24.51	2345
<b>CHS</b>	Chico's Fas Inc	SPECIALTY RETAIL - Apparel Stores	NYSE	44.83	4203
<b>CLE</b>	Claire's Stores Inc	SPECIALTY RETAIL - Apparel Stores	NYSE	29.54	2937
<b>CMX</b>	Caremark Rx Inc	HEALTH SERVICES - Specialized Health Services	NYSE	52.45	3556
<b>CNI</b>	Canadian Natl Railway	TRANSPORTATION - Railroads	NYSE	81	1208
<b>COST</b>	Costco Wholesale Corp	RETAIL - Discount	NASDAQ	49.99	5094
<b>CYTC</b>	Cytoc Corporation	HEALTH SERVICES - Medical Instruments & Supplies	NASDAQ	28.65	2324
<b>DASTY</b>	Dassault Systems Sa	COMPUTER SOFTWARE & SERVICES - Technical & System	NASDAQ	57.06	46
<b>DHI</b>	D.R. Horton Inc	MATERIALS & CONSTRUCTION - Residential Construction	NYSE	36.65	9079
<b>DO</b>	Diamond Offshre Drill	ENERGY - Oil & Gas Drilling & Exploration	NYSE	70.58	5338
<b>EAGL</b>	Egl Incorporated	TRANSPORTATION - Air Delivery & Freight Service	NASDAQ	38.08	1382
<b>FDS</b>	Factset Research	COMPUTER SOFTWARE & SERVICES - Information & Delivery	NYSE	41.42	593
<b>FHR</b>	Fairmont Hotels	LEISURE - Lodging	NYSE	42.87	1792
<b>FWRD</b>	Forward Air Corp	TRANSPORTATION - Trucking	NASDAQ	38.2	452
<b>GGP</b>	General Growth Props I	REAL ESTATE - REIT - Retail	NYSE	47.23	4973
<b>GILD</b>	Gilead Sciences Inc	DRUGS - Biotechnology	NASDAQ	53.02	7133
<b>GNW</b>	Genworth Financial	INSURANCE - Life Insurance	NYSE	34.78	3342

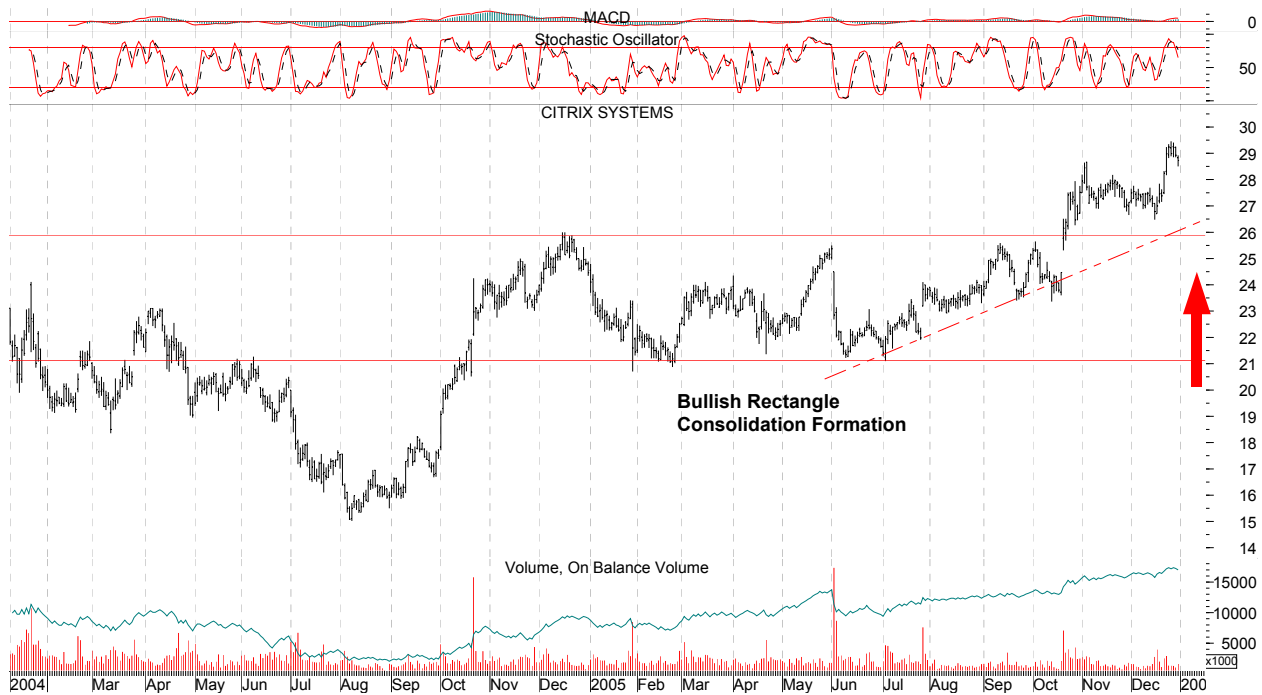


## S&amp;P 4 Star Rated Stocks | Bullish Technical Configurations

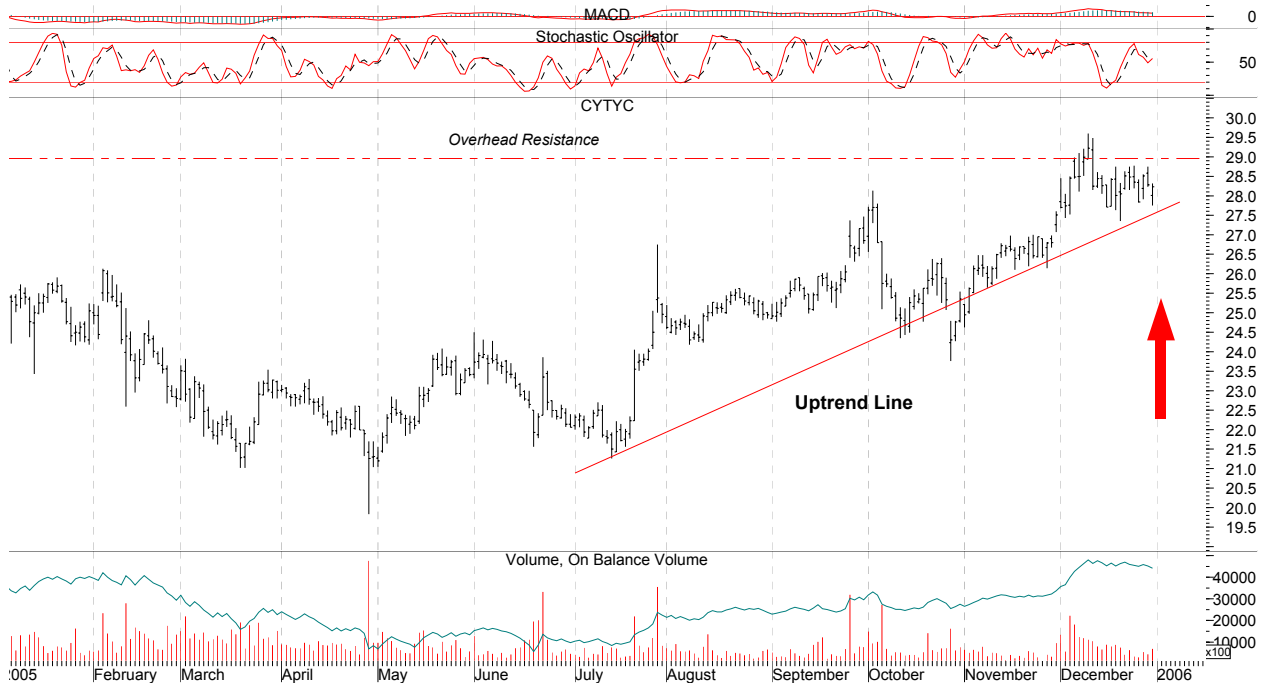
<b>GNW</b>	Genworth Financial	INSURANCE - Life Insurance	NYSE	34.78	3342
<b>GRP</b>	Grant Prideco Inc	ENERGY - Oil & Gas Equipment & Services	NYSE	44.89	5722
<b>HCR</b>	Manor Care Inc	HEALTH SERVICES - Long-Term Care Facilities	NYSE	40.01	693
<b>HRS</b>	Harris Corporation	TELECOMMUNICATIONS - Communication Equipment	NYSE	43.79	2299
<b>HYSL</b>	Hyperion Solutions	COMPUTER SOFTWARE & SERVICES - Application	NASDAQ	36.37	1882
<b>INFA</b>	Informatica Corporation	COMPUTER SOFTWARE & SERVICES - Business Software	NASDAQ	12.31	2540
<b>ING</b>	ING Group N.V.	INSURANCE - Life Insurance	NYSE	35.3	1667
<b>JBL</b>	Jabil Circuit Inc	ELECTRONICS - Printed Circuit Boards	NYSE	37.5	3173
<b>JEC</b>	Jacobs Engineering Group	MATERIALS & CONSTRUCTION - Heavy Construction	NYSE	68.8	656
<b>JPM</b>	JPMorgan Chase & Co	BANKING - Money Center Banks	NYSE	40	28083
<b>JTX</b>	Jackson Hewitt	DIVERSIFIED SERVICES - Personal Services	NYSE	27.77	515
<b>JWN</b>	Nordstrom Inc	SPECIALTY RETAIL - Apparel Stores	NYSE	37.55	4285
<b>KB</b>	Kookmin Bank	BANKING - Foreign Regional Banks	NYSE	75.43	810
<b>LOW</b>	Lowe's Companies Inc	RETAIL - Home Improvement Stores	NYSE	67.32	6093
<b>LUB</b>	Luby's Inc	LEISURE - Restaurants	NYSE	13.07	4401
<b>LUV</b>	Southwest Airlines Co	TRANSPORTATION - Regional Airlines	NYSE	16.7	12242
<b>LZ</b>	Lubrizol Corp	CHEMICALS - Specialty Chemicals	NYSE	43.78	832
<b>MCHP</b>	Microchip Technology Inc	ELECTRONICS - Semiconductor - Specialized	NASDAQ	32.66	6452
<b>MEDX</b>	Medarex Inc	DRUGS - Biotechnology	NASDAQ	13.81	8473
<b>MER</b>	Merrill Lynch & Co	FINANCIAL SERVICES - Investment Brokerage - National	NYSE	68.25	10718
<b>MO</b>	Altria Group Inc	TOBACCO - Cigarettes	NYSE	75.48	38897
<b>NBIX</b>	Neurocrine Biosciences	DRUGS - Biotechnology	NASDAQ	63.48	1595
<b>NEM</b>	Newmont Mining Corp	METALS & MINING - Gold	NYSE	53.12	32430
<b>NOV</b>	National Oilwell Varco Inc	WHOLESALE - Industrial Equipment Wholesale	NYSE	63.48	8821
<b>NVDA</b>	Nvidia Corporation	ELECTRONICS - Semiconductor - Specialized	NASDAQ	37.36	12975
<b>PACR</b>	Pacer International Inc	TRANSPORTATION - Air Delivery & Freight Service	NASDAQ	26.42	753
<b>PBR</b>	Petroleo Brasileiro S.A. Petrobras	ENERGY - Oil & Gas Drilling & Exploration	NYSE	71.11	7374
<b>PDLI</b>	Protein Design Labs Inc	DRUGS - Biotechnology	NASDAQ	28.9	2812
<b>PEG</b>	Public Service Enterprise Group	UTILITIES - Diversified Utilities	NYSE	65.62	4072
<b>PHI</b>	Philippine Lg Dst Tel	TELECOMMUNICATIONS - Telecom Services - Foreign	NYSE	34.31	1229
<b>PKS</b>	Six Flags Inc	LEISURE - General Entertainment	NYSE	7.75	5674
<b>PLD</b>	Prologis	REAL ESTATE - REIT - Diversified/Industrial	NYSE	47.04	4534
<b>PRU</b>	Prudential Financial Inc	INSURANCE - Life Insurance	NYSE	74.18	3727
<b>PSYS</b>	Psychiatric Solutions Inc	HEALTH SERVICES - Specialized Health Services	NASDAQ	58.6	556
<b>RIG</b>	Transocean Inc	ENERGY - Oil & Gas Drilling & Exploration	NYSE	70.7	20957
<b>RL</b>	Polo Ralph Lauren Corp	CONSUMER NON-DURABLES - Textile - Apparel Clothing	NYSE	56.16	1764
<b>RSG</b>	Republic Services Inc	MATERIALS & CONSTRUCTION - Waste Management	NYSE	38.02	2249
<b>SAP</b>	Sap Ag Ads	COMPUTER SOFTWARE & SERVICES - Application	NYSE	45.69	3628
<b>SAY</b>	Satyam Computer Services	COMPUTER SOFTWARE & SERVICES - Information	NYSE	36.89	1794
<b>SFD</b>	Smithfield Foods Inc	FOOD & BEVERAGE - Meat Products	NYSE	30.98	1829
<b>SHO</b>	Sunstone Hotel Investors Inc	REAL ESTATE - REIT - Hotel/Motel	NYSE	26.54	1125
<b>SPG</b>	Simon Property Group	REAL ESTATE - REIT - Retail	NYSE	77.55	2603
<b>SRA</b>	Serono Sa Ads (Bearer)	DRUGS - Biotechnology	NYSE	19.87	513
<b>SUN</b>	Sunoco Inc	ENERGY - Oil & Gas Refining & Marketing	NYSE	79.33	9552
<b>SZE</b>	Suez Adr	UTILITIES - Diversified Utilities	NYSE	31.67	62
<b>THO</b>	Thor Industries Inc	AUTOMOTIVE - Recreational Vehicles	NYSE	40.74	899
<b>TNB</b>	Thomas & Betts Corp	ELECTRONICS - Diversified Electronics	NYSE	42.49	1441
<b>TRN</b>	Trinity Industries Inc	TRANSPORTATION - Railroads	NYSE	44.25	2067
<b>TSM</b>	Taiwan Semicond Mnfgr Co	ELECTRONICS - Semiconductor - Integrated Circuits	NYSE	9.88	16661
<b>TV</b>	Grupo Televisa Sa Gdr	MEDIA - Broadcasting - TV	NYSE	81.06	1617
<b>WCG</b>	Wellcare Health Plans Inc	HEALTH SERVICES - Health Care Plans	NYSE	41.78	405
<b>WDC</b>	Western Digital Corp	COMPUTER HARDWARE - Data Storage Devices	NYSE	18.49	14579
<b>WFR</b>	Memc Electronic Material	ELECTRONICS - Semiconductor - Integrated Circuits	NYSE	22.63	8954
<b>WFT</b>	Weatherford International Ltd	ENERGY - Oil & Gas Equipment & Services	NYSE	36.28	14729
<b>WM</b>	Washington Mutual Inc	BANKING - Savings & Loans	NYSE	44.18	11928
<b>XTO</b>	Xto Energy Inc	ENERGY - Independent Oil & Gas	NYSE	44.47	15064



**ACN: (Bullish)** : Accenture has been steadily building under the radar. The stock has just moved out over resistance and the group (business consulting) is emerging to the upside. Accenture is in an excellent position to extend the uptrend from these levels and the overall look is bullish. The stock remains on the offensive and the bulls are in control.



**CTXS: (Bullish)** : Citrix Systems has broken out of a large basing formation and is starting to stair-step higher. This stock is a source of emerging strength and has formed the foundation for another strong leg to the upside. This is one of the stronger looking technology names out there and CTXS can be bought at this level.



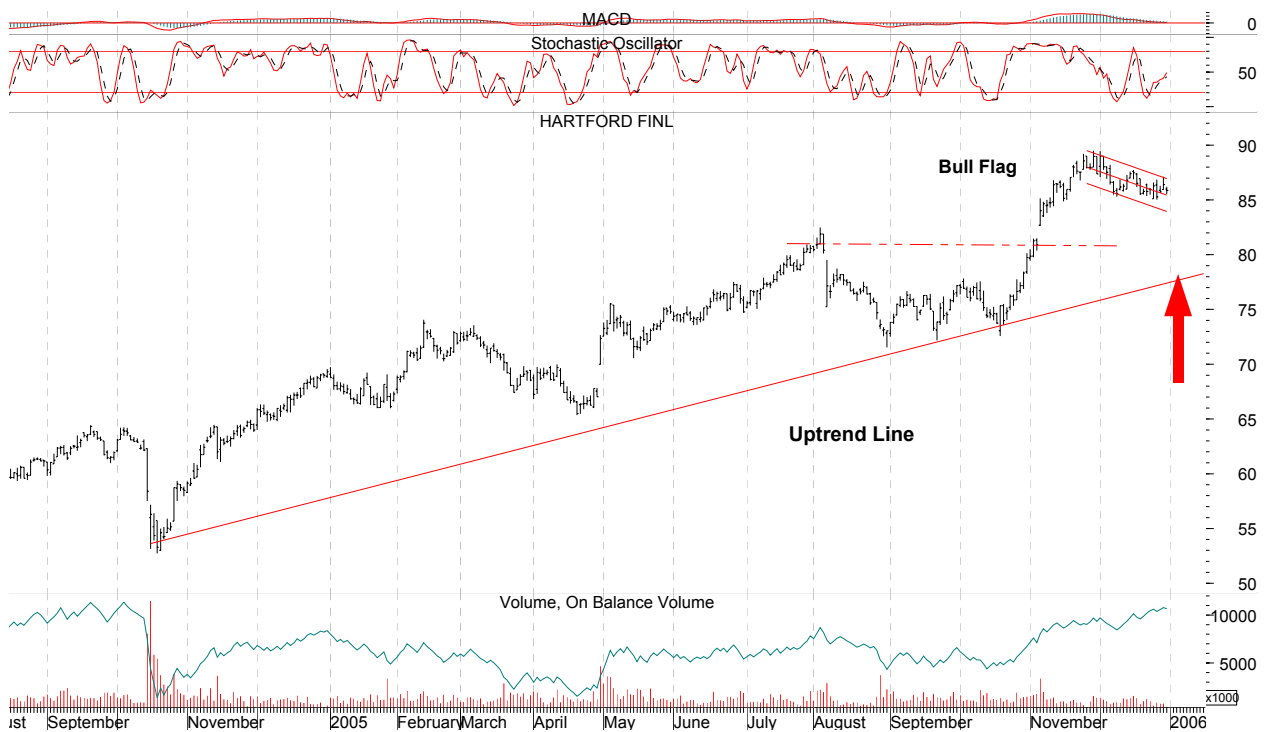
**CYTC: (Bullish)** Ctyc has built out an uptrend since the summer. The stock is approaching overhead resistance in the weekly chart. A move out over \$29.50 would reconfirm the primary trend and provide support for the next leg higher. This is a solid chart that hints at higher prices in the name.



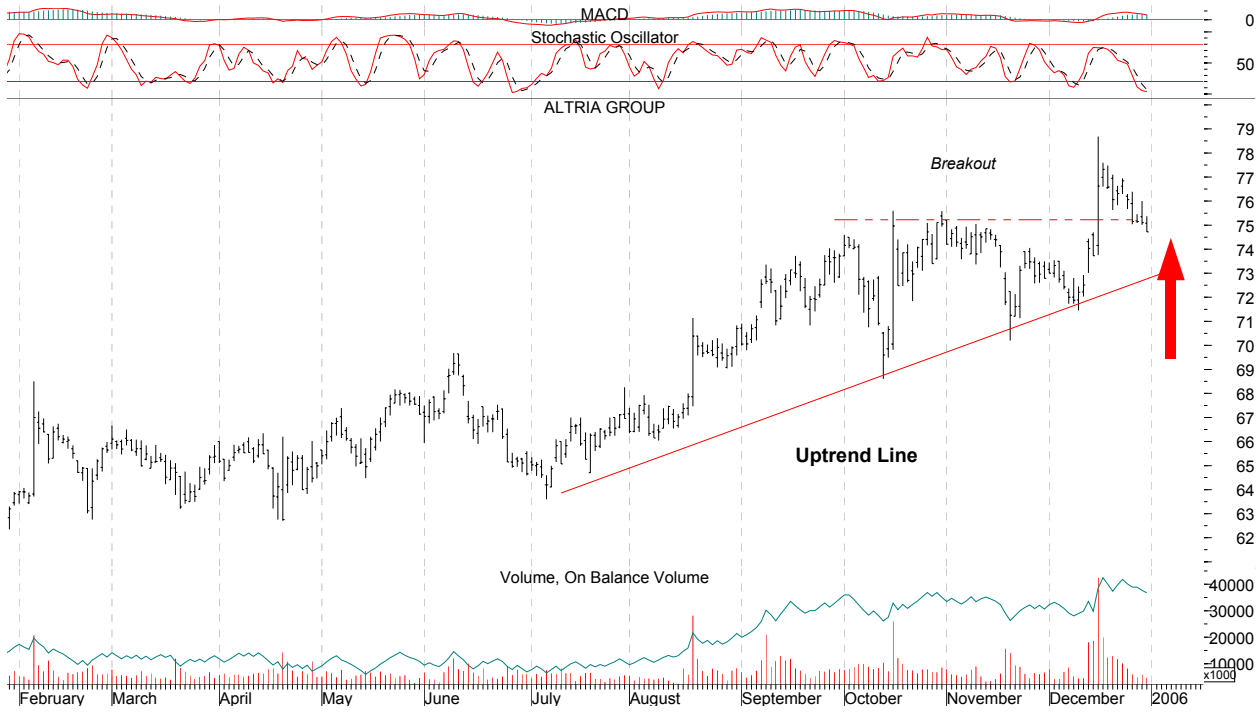
**GILD: (Bullish)** : Gilead Sciences is one of the better looking longs out there. The sector is gaining strength and appears to be coming on in recent weeks. GILD has formed a consolidation off of the recent rally and is setting up to resume the primary uptrend. The overall look is strong and constructive.



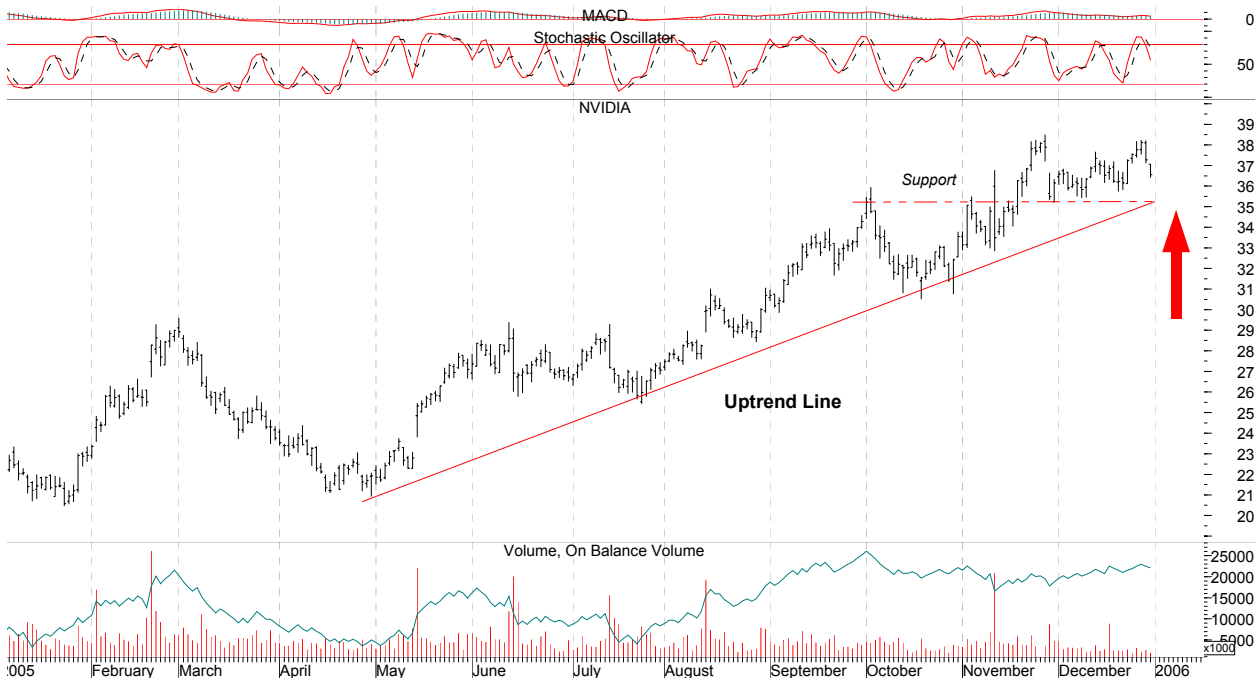
**GRP: (Bullish)** Grant Pridco has broken out and is extending the uptrend. The stock has pulled back in a bullish continuation formation and is ready to resume the primary trend. Commodity related stocks remain strong and GRP is moving along with the group.



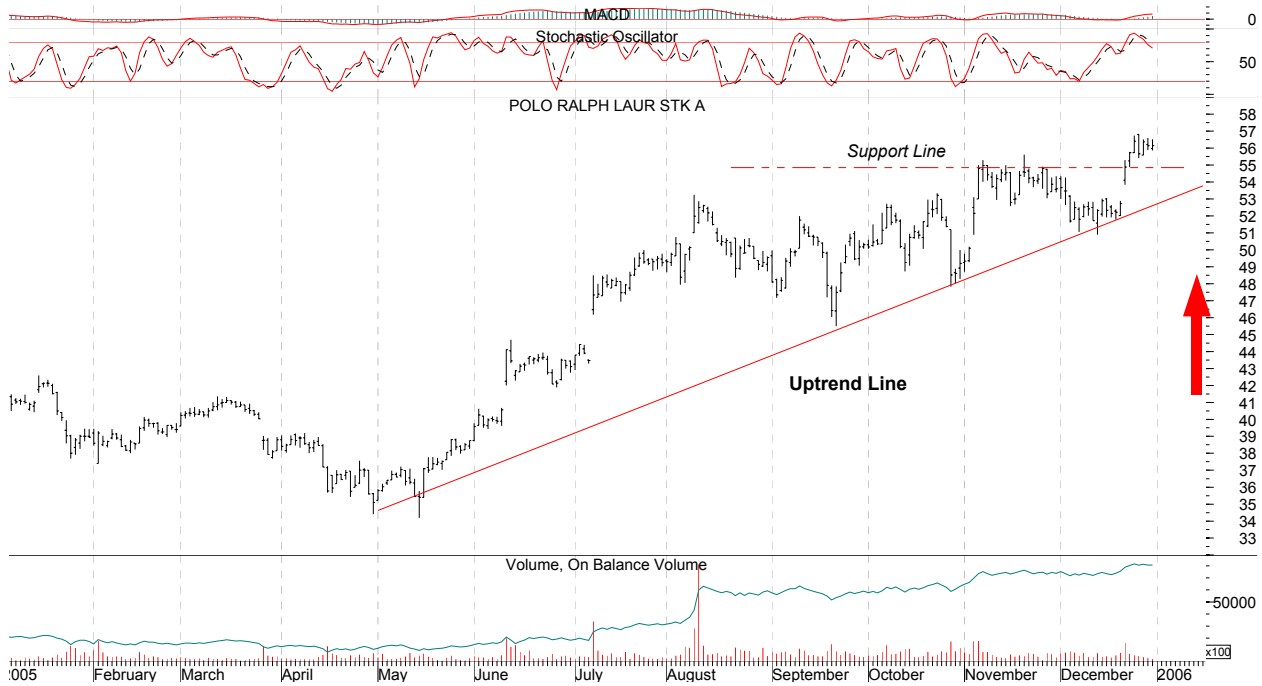
**HIG: (Bullish)** The Hartford Group is an example of the strength we are seeing in the financials and the insurance group in particular. The stock has built out a solid uptrend and has recently formed a bullish continuation pattern in the uptrend. Once this stock completes the minor corrective phase we should see a resumption of the uptrend.



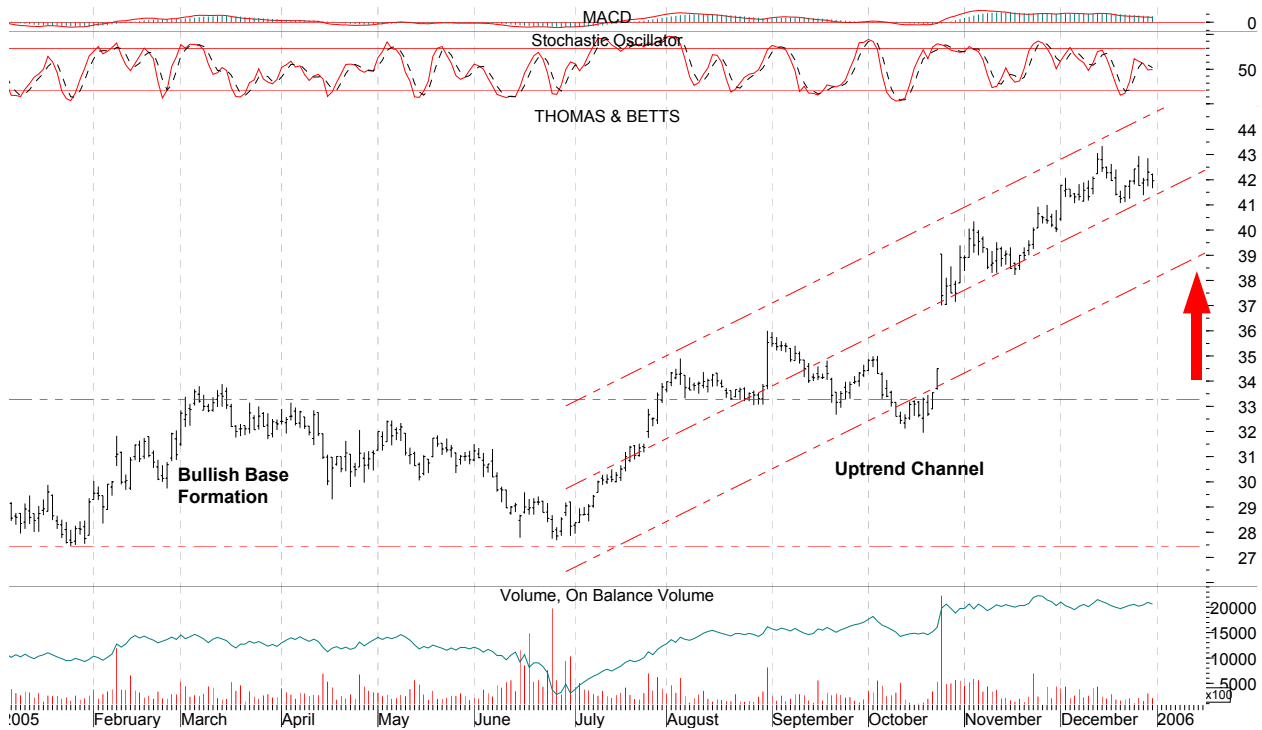
**MO: (Bullish)** Altria has broken out over resistance and reconfirmed the primary uptrend. The pullback off of the recent spike looks like an opportunity to get long in this name. The bulls are in control here and the uptrend is bullish and constructive. Look for an extension to the upside over the coming weeks.



**NVDA: (Bullish)** Power Wave has a great looking chart. The stock has a well established uptrend and the recent gap up on volume looks very attractive. The stock has formed a bullish flag formation here which is a continuation pattern that suggests the stock wants to resume the uptrend. Overall a bullish and constructive chart.



**RL: (Bullish)** Ralph Lauren is a strong apparel stock. RL has broken out over resistance and is confirming the bullish trend. The uptrend is solid and suggests that the bulls are in control. Look for a consolidation at this level then a resumption of the primary uptrend.



**TNB: (Bullish)** Thomas & Betts has gapped up on volume and confirmed the large base formation. The stock has moved out since then in a steady uptrend channel. The stock is extended to the upside considering the weak market conditions this week but a pullback or correction should present a buying opportunity in the name. The overall look is bullish and strong.

**Epiphany Equity Research Team**

**John Hughes**

Managing Director  
Epiphany Equity Research  
Jhughes@Epiphanyresearch.com  
212-320-3080

**Scott Maragioglio**

Dir of Research  
Epiphany Equity Research  
Smaragio@Epiphanyresearch.com  
212-692-6392

**Sherrie Kharouba**

Dir of Client Relations  
Epiphany Equity Research  
Skharouba@Epiphanyresearch.com  
212-320-3041

**Gerard Oberle**

IT Director  
Epiphany Equity Research  
Goberle@Epiphanyresearch.com  
727-866-9943

**Epiphany Equity Research**

111 Broadway  
New York, New York 10005  
Customerservice@Epiphanyresearch.com  
**727-866-9943**